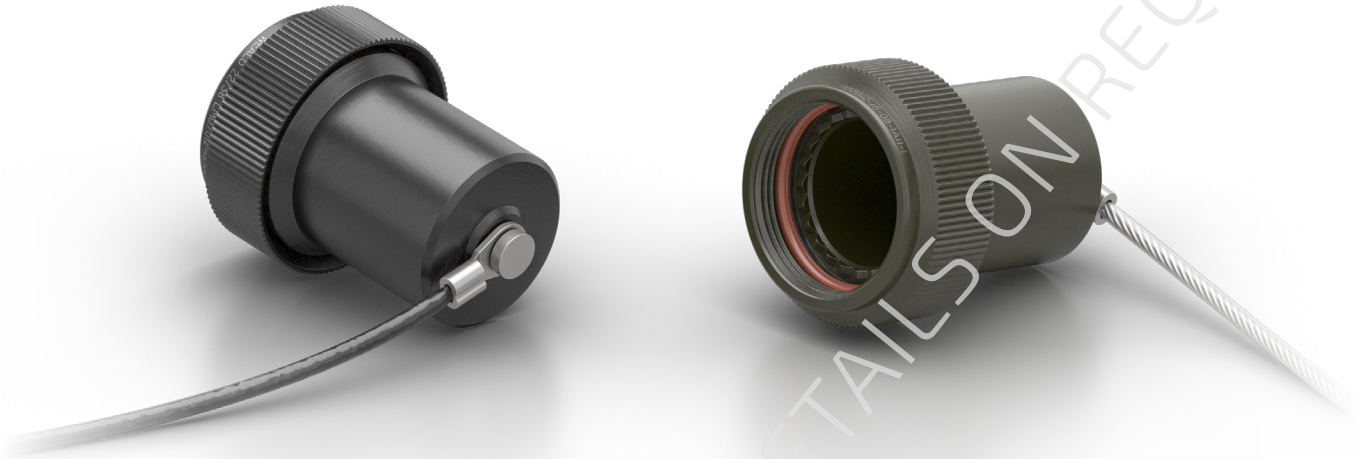
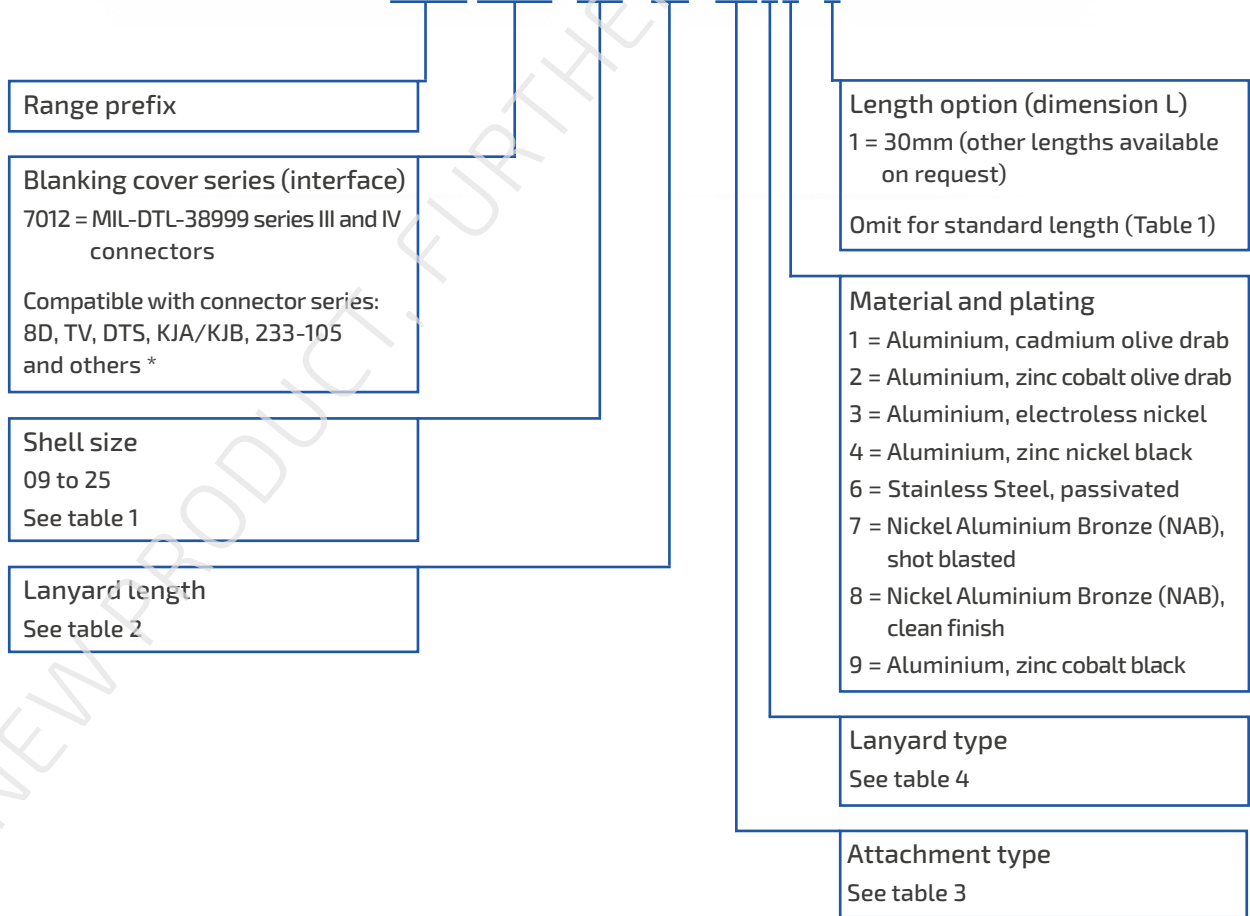


LMD 7012 Series - Blanking Covers

For use with: MIL-DTL-38999 Series III/Series IV/EN3645



Part no example: **LMD 7012 - 09 - 01 - 1A11 - 1**



* - Contact local Sales Office for details

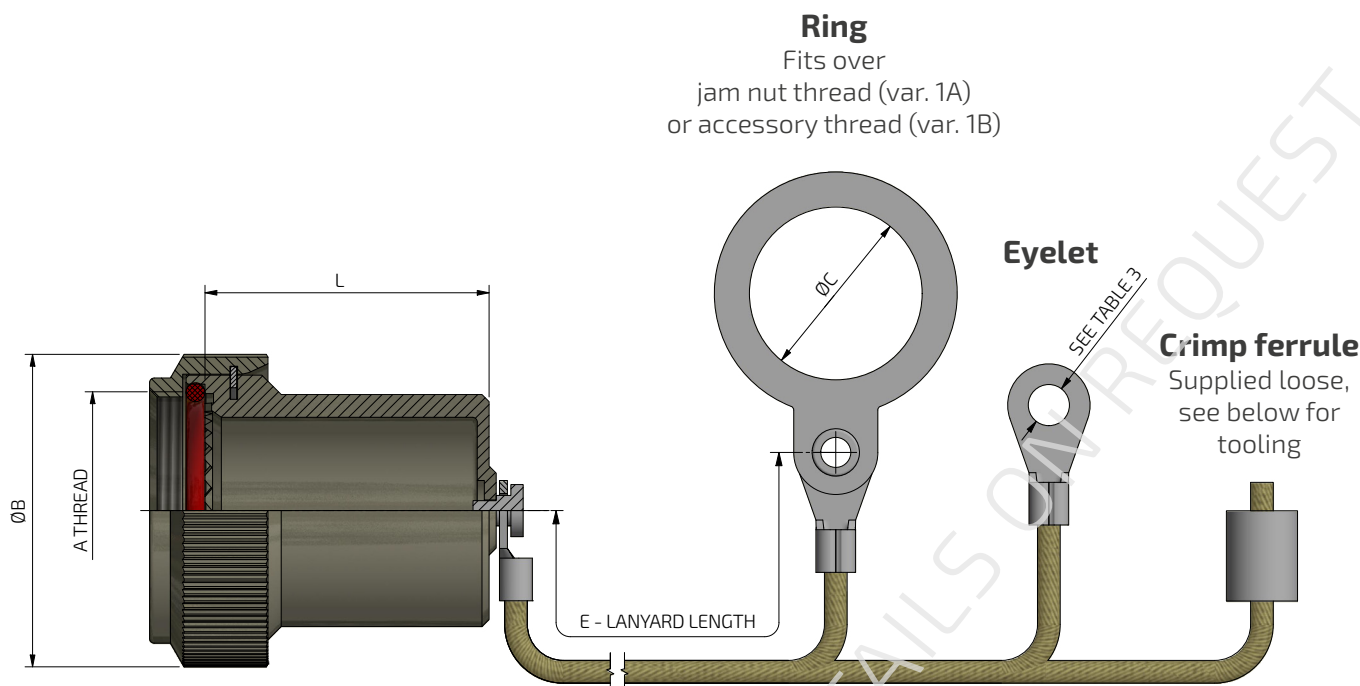


Table 1

Shell size	A thread	B max	L standard	ØC ± 0.25	
				variant 1A	variant 1B
09	M12 x 1.0	Ø18.25	22.5	17.95	13.50
11	M 15 x 1.0	Ø21.25	26.0	22.27	18.50
13	M18 x 1.0	Ø24.75	29.0	25.42	20.50
15	M22 x 1.0	Ø29.75	32.0	30.23	23.50
17	M25 x 1.0	Ø33.25	35.5	32.30	26.30
19	M28 x 1.0	Ø35.75	39.5	36.57	29.50
21	M31 x 1.0	Ø37.55	42.0	38.55	32.50
23	M34 x 1.0	Ø40.25	45.0	42.92	34.50
25	M37 x 1.0	Ø44.25	48.0	44.75	39.00

Table 2

Ref. no	Lanyard Length E ± 8
00	no lanyard
01	120
02	80
03	125
04	140
05	150
06	330
07	300
08	200
10	70
11	90
12	100

Table 3

Ref. no	Attachment type
0	No attachment (no lanyard)
1A	Ring (fits over Jam Nut thread)
1B	Ring (fits over accessory thread)
2	Eyelet 4.3 mm *
4	Eyelet 4.0 (for chain only)
5	Crimp ferrule (supplied loose) *
6	No attachment (with lanyard)
7	Eyelet 3.7 mm *
8	Eyelet 3.2 mm *
9	Eyelet 5.0 mm *

* - Attachments unavailable with ball chain

Table 4

Ref. no	Lanyard type
0	no lanyard
1	Teflon covered (clear) stainless steel wire rope
2	Olive drab nylon cord
4	Ball chain
5	Black nylon cord
6	Teflon covered (black) stainless steel wire rope



Recommended tools for crimp ferrule
 LMT/2/81085 - Crimp Tool Frame
 LMT/2/81086 - Crimp Die Set
 Recommended tool setting - no. 6